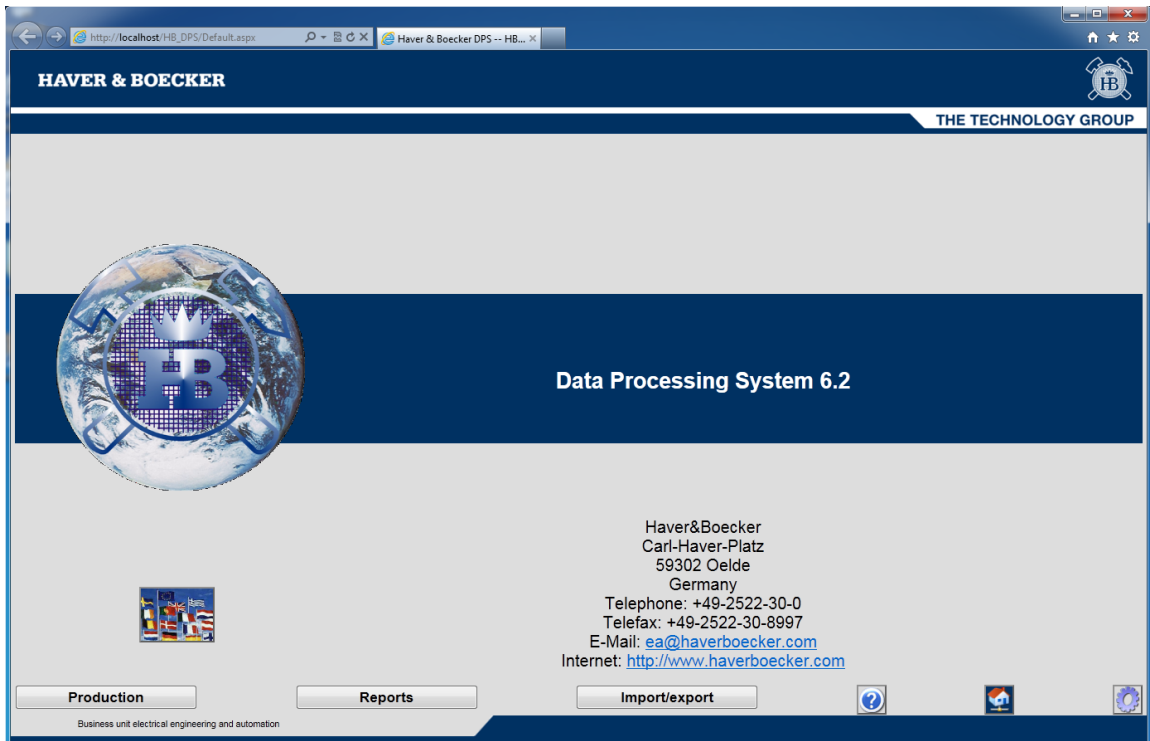


Information

HAYER

Data Processing System

DPS 6.2



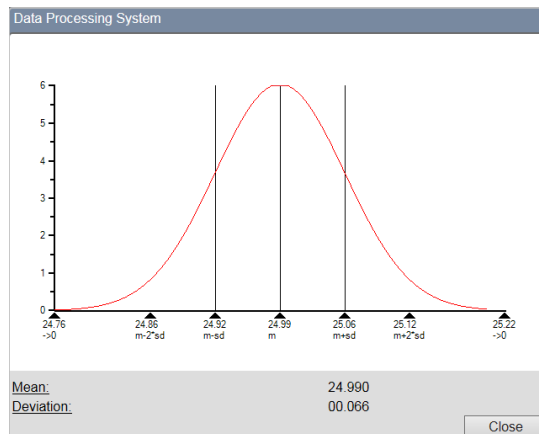
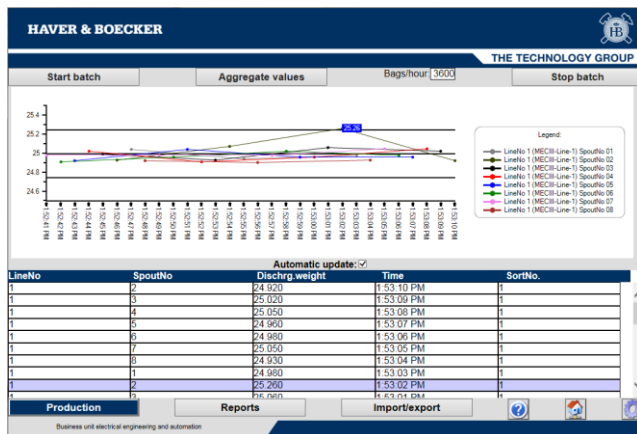
The Haver & Boecker Data Processing System is a program for the acquisition, display and statistical analysis of the weighing-data.

The data is read from the weighing-electronics like the HAYER MEC or check-weighers and it is saved by the use of the most modern database-technology available.

Oracle or Microsoft SQL-server databases can be used. For lower amounts of data (60 mio. Datasets) free versions of the databases from Oracle and Microsoft are provided on the installation-disc.



Information



Interfaces:

- Ethernet for MEC III + 4, WIPOTEC- or Sartorius check-weigher without a limit on the number of connected packing lines
- RS 232 / TTY (20mA) for MEC III, II-20, N, as well as EWK 439, EWK2000, EWK2000+, EWK3000 und WIPOTEC – check-weigher, number of packing lines only limited by hardware
- Access to all DPS – Information (e.g. current bag-weight) is possible directly over the database-interface for customer software. A second network-card is required.

Information:

- Discharge weights
- Sort-changes with classing information
- Batch-changes
- Error-messages
- Warning-function to notice the growth of the database above a certain level

Report-generation:

- Machine-report for extensive evaluation of the overall production
- Single-bag-reports to view every single product
- Average and deviation of weights for single-bag reports and machine-reports
- Error-messages for connected machines
- Extensive configuration options for reports – the massive data is packed in comprehensible and informative packets
- Regular creation of any report-type: Daily, weekly, monthly or annually
- Printout of reports on standard-printers

Production overview:

- Display of received weight-data with time-stamp
- Configurable data-size to individual interests of the user

Export and Import

- Export of data in XML-format, for the use with other software, e.g. Excel
- Data that has formerly been exported and deleted from the database can be imported again to create new reports

System-requirements:

- A „full version“ license of the database has to be supplied by the customer on demand
- Client-Server-System, operation of the DPS via Internet Explorer
- Software-installation only necessary on server-computers, the client-computer only needs an up-to-date Internet Explorer
- Network-connection required between DPS-server and weigher and between DPS-server and clients
- Supported operating systems (no additional software):
 - Windows 7 (32/64 Bit)
 - Windows 8 (32/64 Bit)
 - Windows 10 (32/64 Bit)
 - Windows Server 2008 R2 Standard (64 Bit)
 - Windows Server 2012 Standard (64 Bit)
 - Windows Server 2016 Standard (64 Bit)
- At least a 2 GHz processor, 1 Gbyte RAM and a DVD-reader is needed for the server-computer
- Sufficient hard-drive required, approx. 160 byte per message entry is used
- Ethernet for MECIII requires firmware version
 - Rotopacker: 24.8
 - Rowpacker: 26.6a
 - Nettoweigher: 20.5e